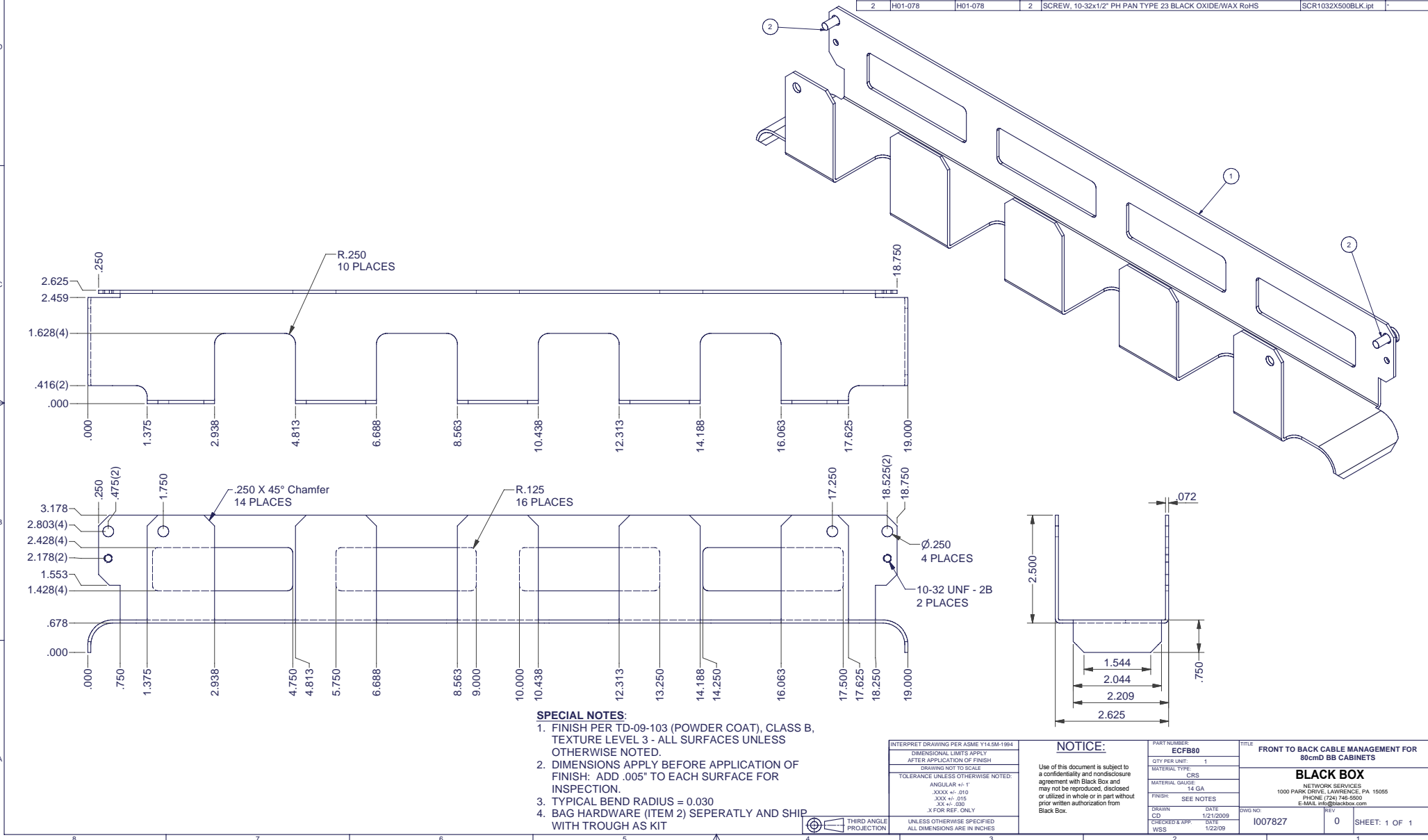


REVISION HISTORY			
REV	DESCRIPTION	DATE	APPROVED
0	ECO-02463	1/22/2009	CD

Bill of Material						
ITEM	PART NUMBER	STOCK NUMBER	QTY	DESCRIPTION	FILE NAME	REVISION
1			1	HORIZONTAL CABLE MANAGEMENT FOR 32" DEEP ELITE BB CABINETS	I007827.ipt	0
2	H01-078	H01-078	2	SCREW, 10-32x1/2" PH PAN TYPE 23 BLACK OXIDE/WAX RoHS	SCR1032X500BLK.ipt	-



INTERPRET DRAWING PER ASME Y14.5M-1994
DIMENSIONAL LIMITS APPLY AFTER APPLICATION OF FINISH
DRAWING NOT TO SCALE
TOLERANCE UNLESS OTHERWISE NOTED:
ANGULAR ± .1°
XXX ± .010
XXX ± .015
XXX ± .030
X FOR REF. ONLY
UNLESS OTHERWISE SPECIFIED ALL DIMENSIONS ARE IN INCHES

NOTICE:

Use of this document is subject to a confidentiality and nondisclosure agreement with Black Box and may not be reproduced, disclosed or utilized in whole or in part without prior written authorization from Black Box.

PART NUMBER:	ECFB80
QTY PER UNIT:	1
MATERIAL TYPE:	CRS
MATERIAL GAUGE:	14 GA
FINISH:	SEE NOTES
DRAWN:	CD
CHECKED & APP:	WSS
DATE:	1/21/2009
DATE:	1/22/09

TITLE		FRONT TO BACK CABLE MANAGEMENT FOR 80cmD BB CABINETS
BLACK BOX		NETWORK SERVICES
1000 PARK DRIVE, LAWRENCE, PA 15565		PHONE (724) 746-6500
E-MAIL: info@blackbox.com		
DWG NO:	I007827	REV: 0
SHEET: 1 OF 1		

