

MORE BLACK BOX CABLING INNOVATIONS



Small cables mean big savings

Optimise space and cable handling in crowded cabinets, high-density data centres and in pathways with thin 28-AWG Slim-Net™ CAT6/CAT6A Ethernet patch cables.

BLACK-BOX.EU/SLIMNET



Largest selection of HDBaseT Recommended CAT5e/6/6A cables

For uncompromised performance, use Black Box cables. They're designed for demanding bandwidth-intensive applications, such as data networks, digital signage, control systems, CCTV, and more. Choose from shielded and unshielded cables.

BLACK-BOX.EU/HDBASET



ETL Verified CAT6A, CAT6, CAT5e Channel Solutions

For performance guaranteed to last the lifetime of your structured cabling system, choose Black Box ETL Verified Channel Solutions.

BLACK-BOX.EU/ITINFRASTRUCTURE



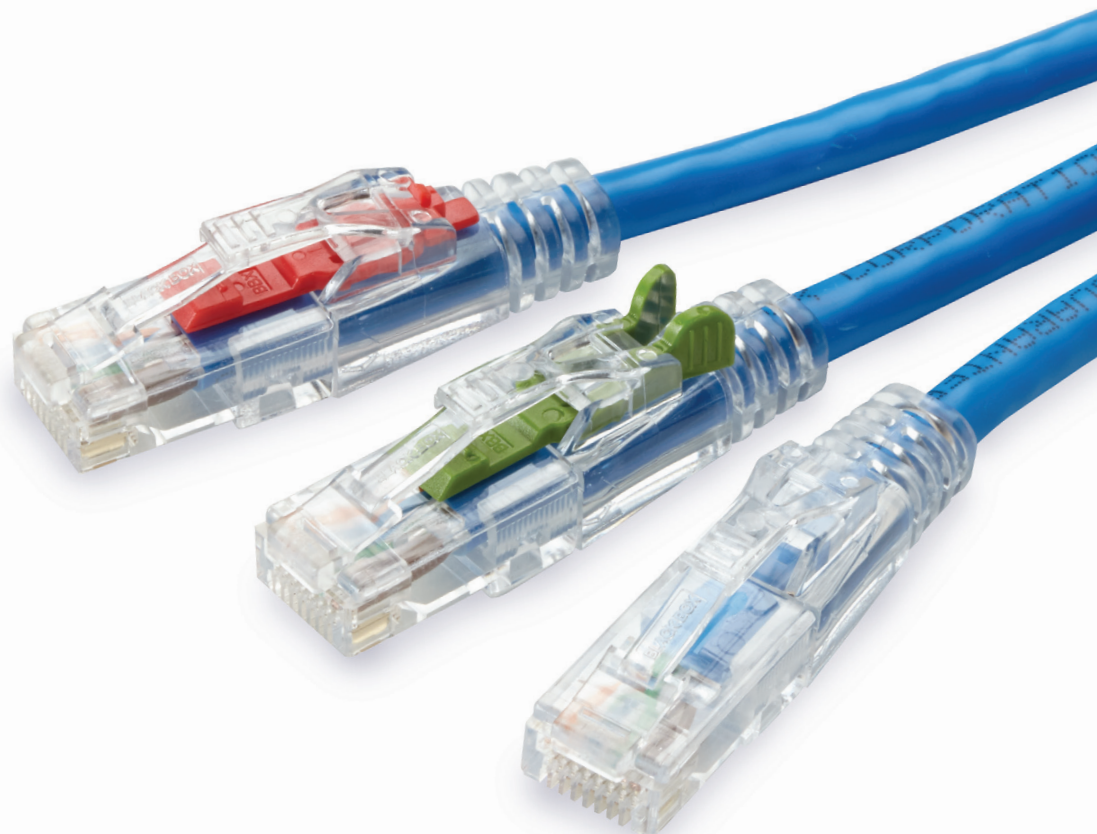
BLACK-BOX.EU/3SERIES

ONE CABLE, THREE LEVELS OF SECURITY

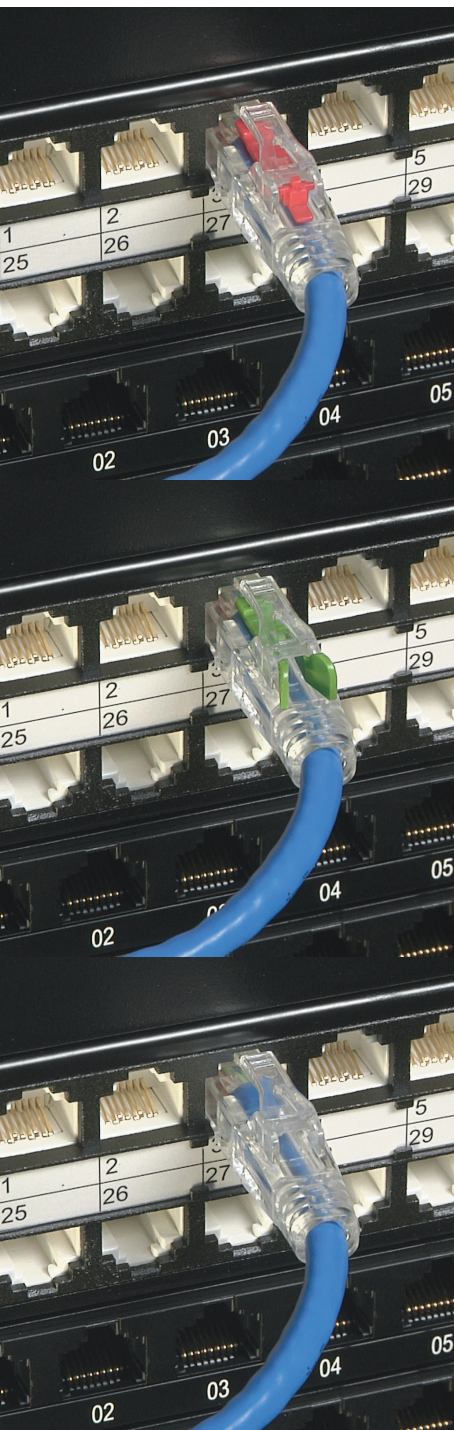
LOCKABLE CAT5e/6/6A
HIGH-PERFORMANCE PATCH CABLES



BLACK BOX



BLACK-BOX.EU/3SERIES



3-SERIES CAT5E, CAT6, CAT6A HIGH-PERFORMANCE PATCH CABLES WITH OPTIONAL LOCKABILITY

These guaranteed-for-life, high-performance cables give you three levels of security depending on the optional locking pin option you choose. They're one of the simplest and most effective ways you can turn network ports into a Layer 1 security tool—when you need to.

RED PIN: LOCKED

- Prevent unauthorized access and tampering of mission-critical and publicly accessible ports especially in government offices, lobbies, retail establishments and more
- Cable stays locked until you release it with the Removal Tool

GREEN PIN: SECURED

- Prevent accidental disconnects, particularly in manufacturing and industrial applications
- Cable is released by squeezing the butterfly tabs; no tool required

NO PIN: PROTECTED

- Even with no locking pin, the rugged, hard-polymer LockPORT™ boot and plug are integrated for better strength and to protect the cable
- Use these premium cables without a locking pin for your everyday network connections

3-SERIES UNSHIELDED LOCKABLE PATCH CABLES		3-SERIES SHIELDED LOCKABLE PATCH CABLES			
TYPE	CAT6	CAT5E	CAT6A	CAT6	CAT5E
BANDWIDTH	550-MHZ	350-MHZ	650-MHZ	250-MHZ	100-MHZ
SHIELDING	UTP	UTP	F/UTP	SC/FTP	F/UTP
BASE PART #*	C6PC60-	C5EPC60-	C6APC80S-	C6PC60S-	C5EPC60S-
COLOUR = XX					
Blue = BL	•	•	•	•	•
Black = BK	•	•	•	•	•
Gray = GY	•	•	•	•	•
White = WH			•		•
Red = RD	•	•		•	•
Green = GN	•	•		•	•
Yellow = YL	•	•		•	•
Violet = VT		•			•
LENGTH = YY					
1 m = 01M	•	•	•	•	•
1,5 m = 01M5	•		•	•	•
2 m = 02M	•	•	•	•	•
3 m = 03M	•	•	•		
5 m = 05M	•	•	•	•	•
7,5 m = 07M5	•	•		•	•
10 m = 10M	•	•		•	•

PORT LOCKS

Lock unused ports

PART #	DESCRIPTION
PL-AB-RD-25PAK	RJ-45, Red, 25-Pack with Removal Key
PL-AB-BK-25PAK	RJ-45, Black, 25-Pack with Removal Key
PL-LC-RD-25PAK	LC, Red, 25-Pack with Removal Key
PL-LC-BK-25PAK	LC, Black, 25-Pack with Removal Key
RT-AB-CL	Extra Port Lock Removal Key



KEY-CL



LP50-RD



LP40-GN

OPTIONAL LOCKING PINS AND REMOVAL KEY

Prevent accidental disconnects or unauthorized access

The Removal Key (sold separately) is constructed of the same hard-polymer as the boot. Keep some Locking Pins (sold separately) on hand in case you need to lock ports.

PART #	DESCRIPTION
LP50-RD-10PAK	Red Locked, 10-Pack
LP50-RD-25PAK	Red Locked, 25-Pack
LP40-GN-10PAK	Green Secure, 10-Pack
LP40-GN-25PAK	Green Secure, 25-Pack
KEY-CL	Removal Key



PL-AB-RD



PL-AB-BK

