

Wall Cabinets

A range of
quality wall
cabinets with
premium
features for a
low price



FEATURES

- >> Fabricated from thick gauge Steel with welded subframes.
- >> Secure with locking sides and front door.
- >> Glazed reversible front door.
- >> Attractive textured grey or black paint finish.
- >> 4 vertical mounting angles with front and side cage nut cutouts and 'U' height marking.
- >> Passive side ventilation.
- >> Dual active roof fan option.
- >> Easy installation with rear hanger device.
- >> Cabinet may be bolted through from inside for additional strength.
- >> Earth bonding kit included.
- >> Removable rear panel
- >> Generous 325mm x 55mm roof and floor cable entry/ exit points
- >> 360° access for ease of configuration

OVERVIEW

The RAK-I.T. family of data enclosures are designed to provide the advanced support, structure and management required by today's cabling systems and equipment.



*RAKE66055
6U x 550mm D*

6U Cabinet	600 x 450	600 x 550	600 x 600
Code	RAKE66045	RAKE66055	RAKE66060
Exterior Height	360mm	360mm	360mm
Exterior Width	600mm	600mm	600mm
Exterior Depth	450mm	550mm	600mm
Useable Height	6U	6U	6U

Item	Code
6U Wall Cabinet 450 mm D	RAKE66045
6U Wall Cabinet 550 mm D	RAKE66055
6U Wall Cabinet 600 mm D	RAKE66060

9U Cabinet	600 x 450	600 x 550	600 x 600
Code	RAKE96045	RAKE96055	RAKE96060
Exterior Height	495mm	495mm	495mm
Exterior Width	600mm	600mm	600mm
Exterior Depth	450mm	550mm	600mm
Useable Height	9U	9U	9U

Item	Code
9U Wall Cabinet 450 mm D	RAKE96045
9U Wall Cabinet 550 mm D	RAKE96055
9U Wall Cabinet 600 mm D	RAKE96060

Precision manufacturing enables a strong, light structure providing unrivalled access to cabling and equipment through quick release sides and doors, saving installation time and minimising disruption when making adds, moves and changes.



*RAKE126055
12U x 550mm D*

12U Cabinet	600 x 450	600 x 550	600 x 600
Code	RAKE126045	RAKE126055	RAKE126060
Exterior Height	625mm	625mm	625mm
Exterior Width	600mm	600mm	600mm
Exterior Depth	450mm	550mm	600mm
Useable Height	12U	12U	12U

Item	Code
12U Wall Cabinet 450 mm D	RAKE126045
12U Wall Cabinet 550 mm D	RAKE126055
12U Wall Cabinet 600 mm D	RAKE126060

15 and 18U	600 x 450	600 x 550	600 x 550
Code	RAKE156045	RAKE156055	RAKE186055
Exterior Height	780mm	780mm	890mm
Exterior Width	600mm	600mm	600mm
Exterior Depth	450mm	550mm	550mm
Useable Height	15U	15U	18U

Item	Code
15U Wall Cabinet 450 mm D	RAKE156045
15U Wall Cabinet 550 mm D	RAKE156055
18U Wall Cabinet 550 mm D	RAKE186055

INSIDE A BLACK BOX WALL CABINET

Black Box Wall Cabinets are engineered around two welded subframes that run from front to back.

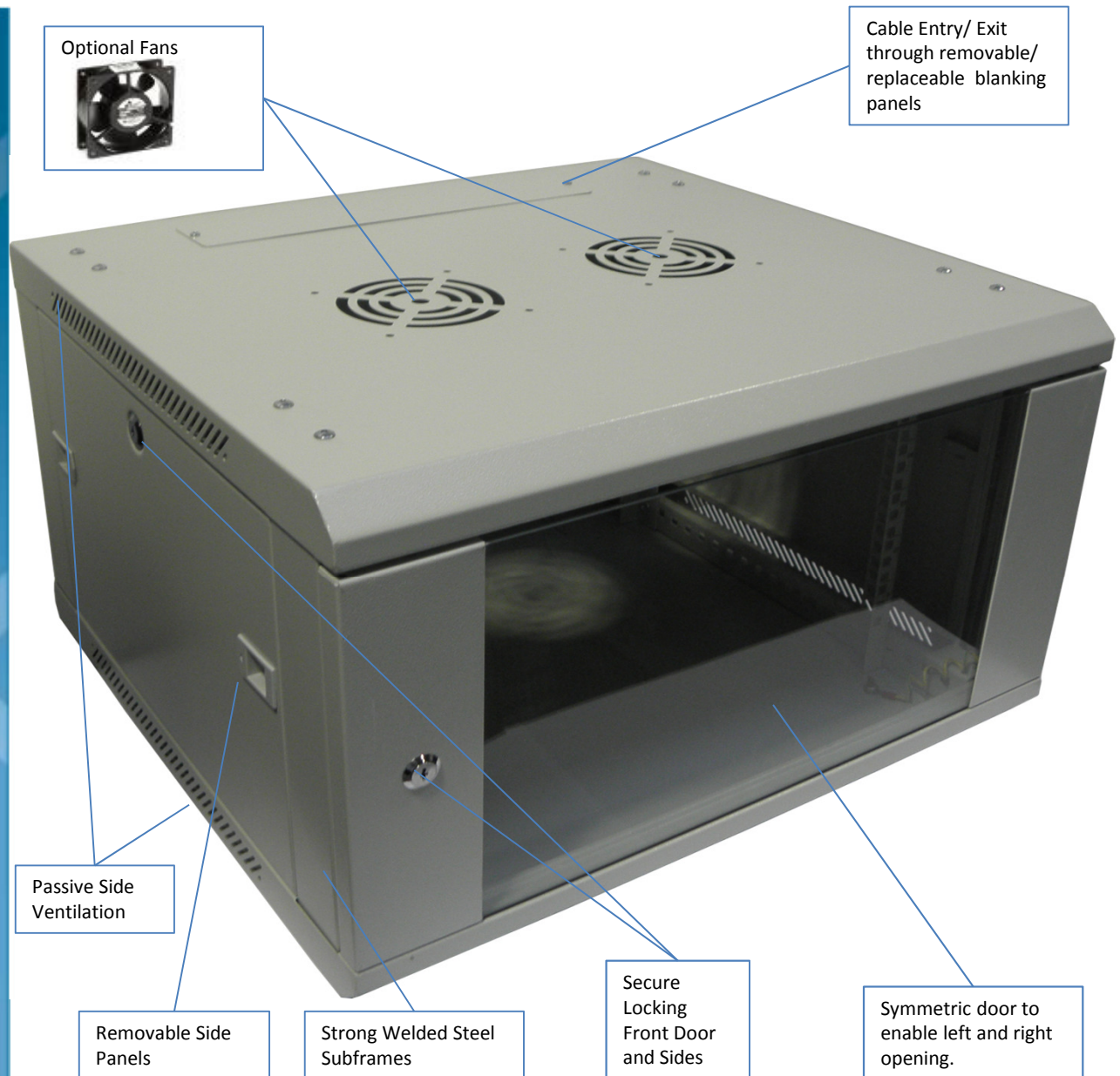
Side panels feature twin latching fasteners for rapid removal and a cam lock for security.

Front and rear rails are mounted on slotted horizontal rails that run from the front to the back of the cabinet for complete flexibility.

On the roof, and underneath a large rectangular blanking panel may be left in situ or removed to allow cable entry / exit.

Four screw holes at the rear of the cabinet enable easy wall mounting.

Optional fans may be mounted in the roof of the cabinet for additional heat extraction.



BUILT FOR EASE OF INSTALLATION

Black Box Wall Cabinets are exceptionally easy to install. A single engineer can hang and configure them.

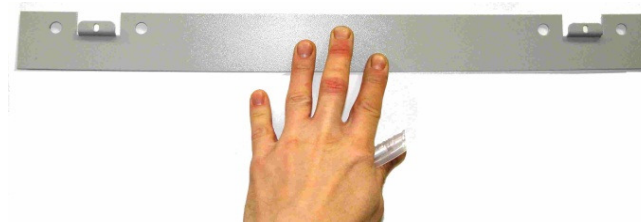
A detachable hanger bar can be positioned, marked, drilled and then secured to the wall.

The cabinet can be hung on the hanger bar in seconds.

The front door, sides and even the back of the cabinet can be removed to provide 360 degree access- ideal if you wish to pre-configure the cabinet before hanging it on the wall.

Removing the front door and sides also reduces the weight to ease the lifting and hanging action.

Cable entry points are large enough that you can pre-wire patch panels and then insert them. Blanking panels are removable and replaceable so they may be machined to accept cable grommets and glands where appropriate.



Wall hanger enables the cabinet to be installed by a single engineer.



Side panels may be unlocked and removed to reduce lifting weight and for ease of access.



Sprung latches enable easy door removal and reversal

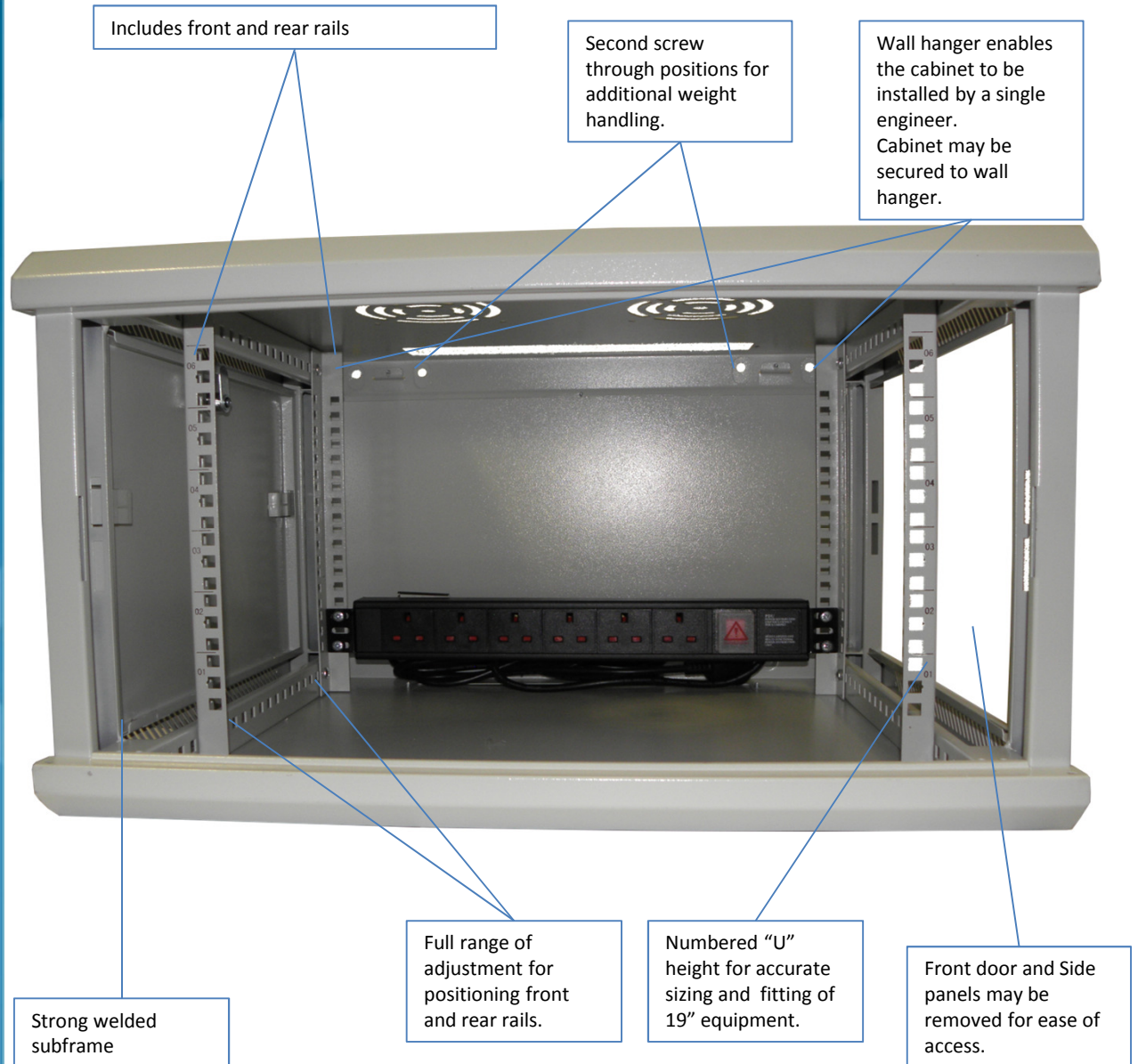
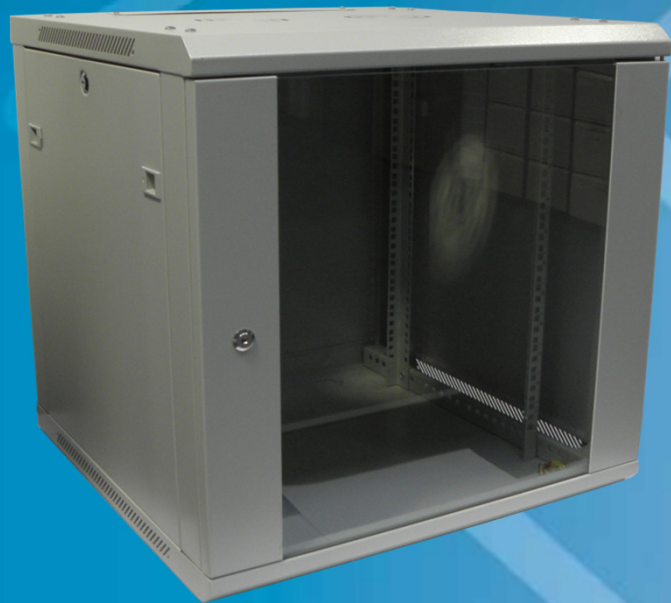


Generous 55 x 325mm cable entry / exit points top and bottom allow the insertion of pre-wired patch panels without the need to recable.

PREMIUM CABINET FEATURES

Black Box wall cabinets are machined from high grade steel. The textured paint finish resists scratches and marks, and the range of colours and glass front door make for an aesthetically pleasing solution.

Front and rear "U" marked rails



Includes front and rear rails

Second screw through positions for additional weight handling.

Wall hanger enables the cabinet to be installed by a single engineer. Cabinet may be secured to wall hanger.

Strong welded subframe

Full range of adjustment for positioning front and rear rails.

Numbered "U" height for accurate sizing and fitting of 19" equipment.

Front door and Side panels may be removed for ease of access.

EXTRAS

Black Box Wall Cabinets also have the features you wouldn't expect in a cabinet at this price level.

An Earth Bonding Kit is included.

The rear panel may be removed – either for ease of configuration or permanently to enable the cabinet to be placed over electrical sockets or wall outlets.

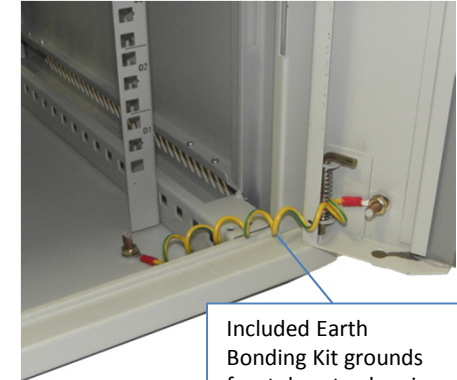
The roof of the enclosure includes mounting points for one or two fans.

Each fan extracts 92 cfm (2.6 m³/min) of air through the roof of the cabinet.

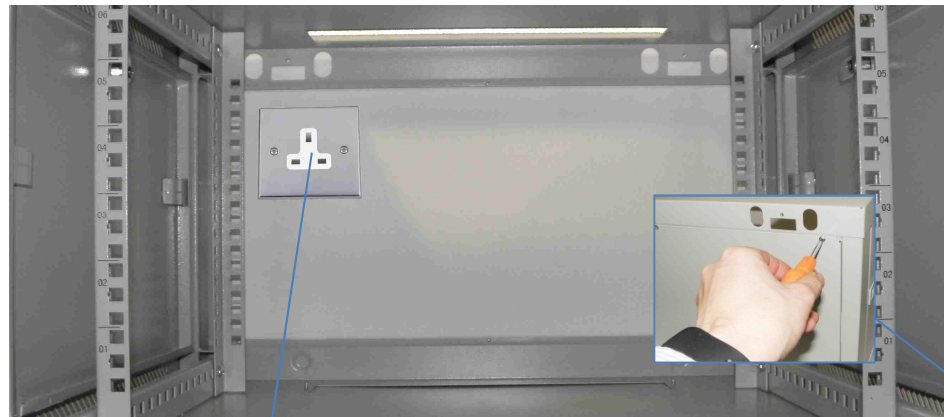


FANS

Item	Code
92 cfm 230VAC Fan	RMT373E-R2



Included Earth Bonding Kit grounds front door to chassis.



Wall sockets can be secured and made available to equipment inside the cabinet.

Removing the rear panel.

SHELVES

Standard Shelves

Standard shelves typically run the full depth of the cabinet and are mounted at the front and rear.

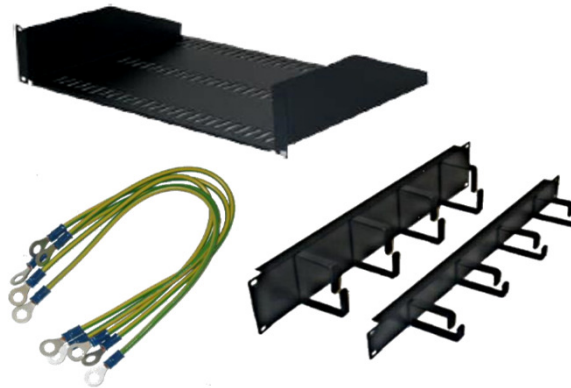
Depending on the load requirement, shelves are of varying thicknesses which can take up “U” space in the cabinet.

Cantilever shelves are for smaller lighter equipment and take up virtually no vertical “U” space.

ACCESSORIES

A range of accessories are available for this cabinet series including:

- >> Fan
- >> PDUs
- >> Cable Managers
- >> Cage Nuts and Screws
- >> Shelves



4 POINT SHELF

Shelves offer a 4 point fixing for heavier / deeper items. Telescopic shelves slide out for easy access and maintenance.

Shelves are perforated to enable even heat distribution.

Item	Code
Standard Shelf 40 cm D	RKT64SH
Telescopic Shelf 40 cm D	RKT64TSH

SHELVES

CANTILEVER SHELF

A short ventilated shelf that saves U height. Cage nut fixings are included with each shelf. Max Load Bearing 15kg evenly spread.

Item	Code
1U 4.45 cm H 20 cm D	RKT12CSH
1U 4.45 cm H 30 cm D	RKT13CSH
2U 8.90 cm H 30 cm D	RKT23CSH
2U 8.90 cm H 40 cm D	RKT24CSH



BLACK BOX EXPLAINS

Bend Radius

You can invest in the best cable and hardware, but if it's not installed properly, it won't work, or at least it won't work well. If you bend twisted-pair cable too much, you loosen the twists and lose performance. Protect your investment by adhering to the following bend radius recommendations under no-load conditions:

UTP horizontal: 4 X the cable diameter.

ScTP horizontal: 8 X the cable diameter.

Multipair backbone: 10 X the cable diameter.

2- and 4-fibre horizontal: Not less than 25mm.

Fibre backbone: Not less than 10 times the cable diameter, or as recommended by the manufacturer.

Even though there is no standard at this time for patch cable bend radius, it's good to be aware of bend radius when using patch cables.

CABLE MANAGEMENT

HORIZONTAL CABLE MANAGERS

Jumper ring panels are perfect for horizontal cable runs into patch panels.

<u>Item</u>	<u>Code</u>
1U x 4-Loop Jumper Ring Panel	RKT14JRP
2U x 4-Loop Jumper Ring Panel	RKT24JRP



CABLE RACEWAY

A horizontal manager that features a cover plate for a more professional appearance.

<u>Item</u>	<u>Code</u>
1U Horizontal Raceway & Cover	RMT100A-R3
2U Horizontal Raceway & Cover	RMT102A-R3



BRUSH PANEL

Brush panels provide an excellent method of concealing excess cable, or feeding cables into patch panels from behind.

<u>Item</u>	<u>Code</u>
1U Brush Panel	RKT1BRP
2U Brush Panel	RKT2BRP



ACCESSORIES

EARTH BONDING KIT

The cabinet includes an earth bonding wire to connect the door to the frame. For more extensive earth bonding between more panels choose the earth bonding kit.

<u>Item</u>	<u>Code</u>
Earth Bonding Kit	RKTEBK

CAGE NUTS, SCREWS AND WASHERS
50 M6 Screws, Cage Nuts and Washers.

<u>Item</u>	<u>Code</u>
50x Cage Nuts/ Screws	RAKCAGENUT50-SP

POWER DISTRIBUTION UNITS PDUs

UK Horizontal PDUs. See website or contact Black Box for metered or intelligent.

Optional connectors include:

BS1363 (UK) IEC C13, C14, C20, Commando

<u>Item</u>	<u>Code</u>
UK Horizontal PDUs – UK Plug	
1U, 4-way	BBPDU4H
1U, 5-way	BBPDU5H
1U, 6-way	BBPDU6H
1U, 7-way unswitched	BBPDU7H
1U, 8-way unswitched	BBPDU8H
2U, 10-way	BBPDU10H2U
2U, 12-way	BBPDU12H2U
2U, 15-way	BBPDU15H2U

